

PREFORMED CLAMPS, STAINLESS STEEL BANDING,
BUCKLES, TOOLS AND SIGN SECUREMENT HARDWARE

STRAPBINDER®

STRAPBINDER.COM

TABLE OF CONTENTS

Strapbinder®, part of the Ideal Tridon Group, is a leading global engineering solutions designer and manufacturer of stainless steel banding, preformed clamps, buckles, tools, and securement hardware used in a broad range of fastening, sealing and mounting applications.

T: 1-800-251-3220

F: 1-615-223-1550

INFO@STRAPBINDER.COM

STRAPBINDER.COM

Index

Adaptor, J-series tool	9	Grip Clamp Tool and Attachments	8
Banding	6	Hose clamps, preformed	3, 4
Aluminum banding	7	ID Tags	5, 10
Economy coils	6	J-Series hose clamps	4
Mill wound coils	6	Job site banding, coils, strapping	10
Self dispensing coil, 100 ft.	6	Leg brackets, flared	11
Self dispensing coil, 200 ft.	6	Leg brackets, straight	11
Stainless steel coils	6	Mounting plates	11
Steel banding	10	Polebinder bolt clamp	11
Steelbinder job site	10	Pow'r-Tight™	5
Ribbon wound coils	10	Pow'r-Wrap™	5
Strapbinder Manual Tools	9	Pusher Seals	7
Totes, 100 ft	6	Preformed hose clamps	3, 4, 5
Bigbinder banding	6	Seals & buckles	7
Sign hanging	11	Sign Hanging Accessories	11
Bolt clamp, Polebinder	11	Sign securement hardware	11
Brackets, sign hanging	11	Polebinder bolt clamp	11
Buckles and seals	7	Sign brackets	11
Aluminum seals	7	Flared leg brackets	11
Crimp type seals	7	Straight leg brackets	11
Eared seals	7	Snaplock	11
Heavy duty	7	Self dispensing stainless coils	6
Screwbinder buckles	7	Screwbinder buckles	7
Winged seals	7	Spin tight tools	9
Center punch hose clamps	3	Stainless steel banding coils	6
Center punch tools	9	Steelbinder™ banding coils	10
Center punch attachment, Grip Clamp Tool	8	Totes, 100 ft coils	6
Clamps	3, 4, 5	Tools, tensioning	8, 9, 10
Center punch, stainless steel	3	Center punch	8, 9
Center punch, galvanized carbon steel	3	J-Series	8, 9
J-Series, stainless steel	4	Spin tight tools	9
J-Series, galvanized steel	4	Steelbinder	10
Pow'r-Tight	5	Pistol Grip	10
Pow'r-Wrap	5	Winged seals	7

Industries Served

Agriculture
Automotive
Construction & General Contracting
Electrical
Energy/Solar/Fracking/Oil & Gas
Farm
Food & Beverage
Industrial & MRO

Industrial Hoses & Tools
Marine
Military
Mining
Municipalities
Petroleum, Chemical & Bulk Transfer
Pipelines
Public Works

Refining, Petro-Chemical & Process
Shipbuilding
Telecommunication
Transportation
Traffic Control
Utilities

Center Punch

Strapbinder's double wrapped center punch preformed hose clamps are available in various materials and diameters to satisfy a wide variety of applications. Available in multiple diameters and 3/8" or 5/8" band widths, Strapbinder clamps can be ordered in T201 stainless steel or high strength galvanized steel with heavy duty stainless steel locks.



Tools for Product:

- Strapbinder **HBC-300 tensioning tool** (pg 9)
- Strapbinder **F38 ratchet style application tool** (pg 9)
- Strapbinder **Grip Clamp tool #800800** (pg 8) for maximum installation efficiency

STAINLESS STEEL

Item No.	Clamp I.D.		Band Width		Band Thickness		Qty/Box	Carton Weight	
	inch	mm	inch	mm	inch	mm		lbs	kg
HBCP3S	13/16	20.5	3/8	9.5	.025	.64	100	3.6	1.6
HBCP311S	1-3/8	34.8	3/8	9.5	.025	.64	100	4.6	2.1
HBCP4S	1	25.4	5/8	15.9	.025	.64	100	8.3	3.8
HBCP5S	1-1/4	31.7	5/8	15.9	.025	.64	100	8.7	3.9
HBCP6S	1-1/2	38.1	5/8	15.9	.025	.64	100	9.7	4.4
HBCP7S	1-3/4	44.4	5/8	15.9	.025	.64	100	10.6	4.8
HBCP8S	2	50.8	5/8	15.9	.025	.64	100	11.5	5.2
HBCP9S	2-1/4	57.1	5/8	15.9	.025	.64	100	12.6	5.7
HBCP10S	2-1/2	63.5	5/8	15.9	.025	.64	50	6.8	3.1
HBCP11S	2-3/4	69.8	5/8	15.9	.025	.64	50	7.3	3.3
HBCP12S	3	76.2	5/8	15.9	.025	.64	50	7.7	3.5
HBCP14S	3-1/2	88.9	5/8	15.9	.025	.64	50	8.7	3.9
HBCP16S	4	101.6	5/8	15.9	.025	.64	25	4.9	2.2
HBCP18S	4-1/2	114.3	5/8	15.9	.025	.64	25	5.5	2.5
HBCP20S	5	127.0	5/8	15.9	.025	.64	25	5.9	2.7
HBCP24S	6	152.4	5/8	15.9	.025	.64	25	6.8	3.1
HBCP28S	7	177.8	5/8	15.9	.025	.64	25	7.4	3.4
HBCP32S	8	203.2	5/8	15.9	.025	.64	25	8.2	3.7

GALVANIZED CARBON STEEL

Item No.	Clamp I.D.		Band Width		Band Thickness		Qty/Box	Carton Weight	
	inch	mm	inch	mm	inch	mm		lbs	kg
HBCP3	13/16	20.5	3/8	9.5	.027	.69	100	3.6	1.6
HBCP311	1-3/8	34.8	3/8	9.5	.027	.69	100	4.6	2.1
HBCP4	1	25.4	5/8	15.9	.027	.69	100	8.3	3.8
HBCP5	1-1/4	31.7	5/8	15.9	.027	.69	100	8.7	3.9
HBCP6	1-1/2	38.1	5/8	15.9	.027	.69	100	9.7	4.4
HBCP7	1-3/4	44.4	5/8	15.9	.027	.69	100	10.6	4.8
HBCP8	2	50.8	5/8	15.9	.027	.69	100	11.5	5.2
HBCP9	2-1/4	57.1	5/8	15.9	.027	.69	100	12.6	5.7
HBCP10	2-1/2	63.5	5/8	15.9	.027	.69	50	6.8	3.1
HBCP11	2-3/4	69.8	5/8	15.9	.027	.69	50	7.3	3.3
HBCP12	3	76.2	5/8	15.9	.027	.69	50	7.7	3.5
HBCP14	3-1/2	88.9	5/8	15.9	.027	.69	50	8.7	3.9
HBCP16	4	101.6	5/8	15.9	.027	.69	25	4.9	2.2
HBCP18	4-1/2	114.3	5/8	15.9	.027	.69	25	5.5	2.5
HBCP20	5	127.0	5/8	15.9	.027	.69	25	5.9	2.7
HBCP24	6	152.4	5/8	15.9	.027	.69	25	6.8	3.1
HBCP28	7	177.8	5/8	15.9	.027	.69	25	7.4	3.4
HBCP32	8	203.2	5/8	15.9	.027	.69	25	8.2	3.7

Smooth-Seal™ J-Series

Strapbinder J-Series clamps are ideal for most industrial hose clamping applications. Available in multiple diameters and band widths, our J-Series clamps are offered in T201 stainless steel or high strength galvanized steel with heavy duty stainless steel buckles.



Tools for Product:

- Any of the bench mounted, pneumatic machines in the industry
- Strapbinder **ST-001 manual spin tight tool (pg 9)** with the **HBJ-001 adapter (pg 9)**
- Strapbinder **Grip Clamp tool #800500 (pg 8)** for maximum installation efficiency

STAINLESS STEEL

Item No.	Clamp Inside I.D.		Band Width		Band Thickness		Qty/Box	Weight	
	in	mm	in	mm	in	mm		lbs	kg
HBJS201	13/16	20.5	3/8	9.4	.025	.64	100	3.6	1.6
HBJS242	1	25.4	1/4	6.3	.020	.51	100	2.1	1.0
HBJS243	1	25.4	3/8	9.4	.025	.64	100	3.4	1.5
HBJS202	1-3/8	34.8	3/8	9.4	.025	.64	100	4.7	2.1
HBJS203	1	25.4	1/2	12.7	.030	.76	100	6.5	2.9
HBJS204	1-1/4	31.7	1/2	12.7	.030	.76	100	7.2	3.3
HBJS241	1-3/8	34.8	1/4	6.3	.020	.51	100	2.5	1.1
HBJS205	1-1/2	38.1	5/8	15.7	.030	.76	100	10.4	4.7
HBJS206	1-3/4	44.4	5/8	15.7	.030	.76	100	11.3	5.1
HBJS245	2	50.8	3/8	9.4	.025	.64	100	5.5	2.5
HBJS207	2	50.8	5/8	15.7	.030	.76	100	12.2	5.5
HBJS208	2-1/4	57.1	5/8	15.7	.030	.76	100	13.3	6.0
HBJS209	2-1/2	63.5	5/8	15.7	.030	.76	100	13.9	6.3
HBJS210	2-3/4	69.8	3/4	19.0	.030	.76	50	9.2	4.2
HBJS211	3	76.2	3/4	19.0	.030	.76	50	9.7	4.4
HBJS212	3-1/2	88.9	3/4	19.0	.030	.76	50	10.8	4.9
HBJS213	4	101.6	3/4	19.0	.030	.76	25	6.1	2.8
HBJS214	4-1/2	114.3	3/4	19.0	.030	.76	25	6.7	3.0
HBJS215	5	127.0	3/4	19.0	.030	.76	25	7.2	3.3
HBJS216	6	152.4	3/4	19.0	.030	.76	25	8.2	3.7
HBJS218	7	177.8	3/4	19.0	.030	.76	25	10.2	4.6
HBJS219	8	203.2	3/4	19.0	.030	.76	25	11.0	5.0

GALVANIZED STEEL

Item No.	Clamp Inside I.D.		Band Width		Band Thickness		Qty/Box	Weight	
	in	mm	in	mm	in	mm		lbs	kg
HBJS301	13/16	20.5	3/8	9.4	.027	.69	100	3.6	1.6
HBJS343	1	25.4	3/8	9.4	.027	.69	100	3.9	1.8
HBJS302	1-3/8	34.8	3/8	9.4	.027	.69	100	4.7	2.1
HBJS304	1-1/4	31.7	1/2	12.7	.027	.69	100	7.2	3.3
HBJS305	1-1/2	38.1	5/8	15.7	.027	.69	100	10.4	4.7
HBJS306	1-3/4	44.4	5/8	15.7	.027	.69	100	11.3	5.1
HBJS307	2	50.8	5/8	15.7	.027	.69	100	12.2	5.5
HBJS309	2-1/2	63.5	5/8	15.7	.027	.69	100	13.9	6.3
HBJS310	2-3/4	69.8	3/4	19.0	.027	.69	50	9.2	4.2
HBJS311	3	76.2	3/4	19.0	.027	.69	50	9.7	4.4
HBJS312	3-1/2	88.9	3/4	19.0	.027	.69	50	10.8	4.9
HBJS313	4	101.6	3/4	19.0	.027	.69	25	6.1	2.8
HBJS314	4-1/2	114.3	3/4	19.0	.027	.69	25	6.7	3.0
HBJS315	5	127.0	3/4	19.0	.027	.69	25	8.2	3.7
HBJS318	7	177.8	3/4	19.0	.027	.69	25	10.2	4.6

Pow'r-Tight™ Clamp

The Strapbinder Pow'r-Tight clamps deliver best-in-class performance for demanding applications ideal for thick walled and higher durometer hose. Stronger than the J-Series clamp, the Pow'r-Tight is constructed with ¾" wide T201 ¼" hard stainless steel for exceptional band strength. The Pow'r-Tight has a smooth seal design for gap free contact, a heavy duty buckle, and is double wrapped to provide optimal holding power. Offered in diameters from 2" to 9".



STAINLESS STEEL

Item No.	Clamp Inside I.D.		Band Width		Band Thickness		Qty/Box	Weight	
	in	mm	in	mm	in	mm		lbs	kg
HDSL227	2	50.8	3/4	19.1	0.030	0.76	100	16.9	7.7
HDSL210	2.75	69.8	3/4	19.1	0.030	0.76	50	10.3	4.7
HDSL211	3	76.2	3/4	19.1	0.030	0.76	50	10.8	4.9
HDSL212	3.5	88.9	3/4	19.1	0.030	0.76	50	6.2	2.8
HDSL213	4	101.6	3/4	19.1	0.030	0.76	25	6.7	3.0
HDSL214	4.5	114.3	3/4	19.1	0.030	0.76	25	7.2	3.3
HDSL215	5	127	3/4	19.1	0.030	0.76	25	7.9	3.6
HDSL216	6	152.4	3/4	19.1	0.030	0.76	25	8.9	4.0
HDSL218	7	177.8	3/4	19.1	0.030	0.76	25	9.9	4.5
HDSL219	8	203.2	3/4	19.1	0.030	0.76	25	11.1	5.0
HDSL228	9	228.6	3/4	19.1	0.030	0.76	10	12.2	5.6

Pow'r-Wrap™ Ties

The Strapbinder Pow'r-Wrap is a stainless steel tie that is dependable, easy to apply, and can be used in a broad range of fastening, securing, and sealing applications. The Pow'r-Wrap is constructed with 304 stainless steel for exceptional corrosion resistance in outdoor environments. The tie is a smooth seal design for gap free contact & tensions, cuts and locks for quick and easy application. It can be used for the securement of ducting, tags, hoses, cable bundles and constant velocity boots. Offered in lengths of 10" up to 35".



STAINLESS STEEL

Item No.	Width		Length		Thickness		Carton Qty	Carton Weight		Hose OD*
	inch	mm	inch	mm	inch	mm		lbs	kg	inch
HBPW211	1/4	6.35	10	254.0	0.015	0.38	500	6.4	2.9	2
HBPW212	1/4	6.35	16.5	419.1	0.015	0.38	500	10.1	4.6	4
HBPW213	1/4	6.35	22.5	571.5	0.015	0.38	500	13.3	6.0	6
HBPW214	1/4	6.35	29	736.6	0.015	0.38	500	17.6	8.0	8
HBPW215	1/4	6.35	35	889.0	0.015	0.38	500	21.2	9.6	10

For a complete, reliable system, use Strapbinder Pow'r-Wrap Ties with Strapbinder [ID Tags \(pg 5 & 10\)](#).

Identification Tags

The ID tags are .015" thick and can be fastened with Strapbinder Pow'r-Wrap ties.



Item No.	Description	Material	Qty/Box	Weight	
				lbs	kg
ST750350	3/4" X 3-1/2"	T304	100	0.6	0.30
ST750200	3/4" X 2"	T316	100	0.5	0.20
ST150250	1-1/2" X 2-1/2"	T316	100	1.4	0.67



Strapbinder stainless steel banding is available in Type 201, 304 or 316 stainless steel. Strapbinder stainless is ideal for large diameter hose assemblies, sign securement, insulation applications and general construction use. It is made with a conditioned edge for safer handling.

Type 201 Stainless Steel

Type 201 stainless steel has excellent mechanical properties and strength. Due to its high work hardening rate, it possesses uniform elongation for improved stretchability for severe forming applications such as strapping bands and preformed hose clamps.

Type 304 Stainless Steel

Type 304 stainless steel is an 18% chromium and 8% nickel alloyed stainless steel. Used most often in outdoor industrial applications, it offers good corrosion resistance and is weldable.

Type 316 Stainless Steel

Type 316 stainless steel provides superior corrosion resistance, making it ideal for use near salt water and petrochemical facilities.



Item No.	Width		Type	Thickness		Weight		Qty/Coil	
	inch	mm		inch	mm	lbs	kg	ft	M

100 ft. Self Dispensing Coils

ST202	1/4	6.3	201	.020	.51	1.7	0.9	100	30
ST203	3/8	9.5	201	.025	.63	3.2	1.6	100	30
ST204	1/2	12.7	201	.030	.76	5.1	2.4	100	30
ST205	5/8	15.8	201	.030	.76	6.4	3.0	100	30
ST206	3/4	19.0	201	.030	.76	7.7	3.6	100	30
ST404	1/2	12.7	316	.030	.76	5.1	2.4	100	30
ST406	3/4	19.0	316	.030	.76	7.7	3.6	100	30



Item No.	Width		Tote Color	Thickness		Weight		Qty/Coil	
	inch	mm		inch	mm	lbs	kg	ft	M

100 ft. Plastic Totes (Type 201 Stainless Steel)

ST204B	1/2	12.7	Blue	.030	.76	5.1	2.4	100	30
ST205G	5/8	15.8	Green	.030	.76	6.4	3.0	100	30
ST206R	3/4	19.0	Red	.030	.76	7.7	3.6	100	30



Item No.	Width		Type	Thickness		Weight		Qty/Coil	
	inch	mm		inch	mm	lbs	kg	ft	M

200 ft. Economy Coils for Light Duty Applications

ST128/904	1/2	12.7	304	.015	.38	5.5	2.5	200	61
ST183/914	1/2	12.7	304	.020	.51	7.0	3.2	200	61
ST184	1/2	12.7	304	.025	.63	8.5	3.6	200	61
ST129/905	5/8	15.8	304	.015	.38	6.4	3.0	200	61
ST129.5/915	5/8	15.8	304	.020	.51	8.5	3.6	200	61
ST163/916	3/4	19.0	304	.020	.51	11.2	5.1	200	61
ST165	3/4	19.0	304	.025	.63	12.7	5.8	200	61



Bigbinder Band

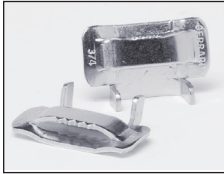
ST430	3/4	19.0	201	.044	1.1	11.6	5.4	100	30
ST431	1	25.4	201	.044	1.1	13.7	6.4	100	30
ST432	1-1/4	31.8	201	.044	1.1	17.2	8.0	100	30



Mill Wound Coils

BLCPX04155	1/2	12.7	304	.015	.38	100	45.4	3,920	1195	Oscillate
305SSR900	1/2	12.7	304	.020	.51	39	17.7	900	274	Ribbon
305SSV3000	1/2	12.7	304	.020	.51	100	45.4	3,000	914	Oscillate
BLCPX05202	5/8	15.8	304	.020	.51	100	45.4	2,300	701	Oscillate
311SSR900	3/4	19.0	304	.020	.51	42	19.1	900	274	Ribbon
311SSV2000	3/4	19.0	304	.020	.51	100	45.4	2,000	610	Oscillate

Strapbinder seals and buckles are ideal for forming applications such as strapping bands and preformed hose clamps.



Buckles

Available in an ear style or heavy duty, Strapbinder buckles are made with Type 201 or Type 316 stainless steel to suit a wide variety of applications.

Item No.	Buckle Style	Material	Width		Qty/Box	Weight	
			inch	mm		lbs	kg
ST252	Ear	201	1/4	6.3	100	.3	.1
ST253	Ear	201	3/8	9.5	100	.8	.4
ST254	Ear	201	1/2	12.7	100	2.1	1.0
ST255	Ear	201	5/8	15.8	100	2.4	1.1
ST256	Ear	201	3/4	19.0	100	3.7	1.7
ST454	Ear	316	1/2	12.7	100	2.1	1.0
ST456	Ear	316	3/4	19.0	100	3.7	1.7
ST440	Heavy duty	201	3/4	19.0	25	1.8	.8
ST441	Heavy duty	201	1	25.4	25	2.4	1.1
ST442	Heavy duty	201	1-1/4	31.8	25	3.2	1.4



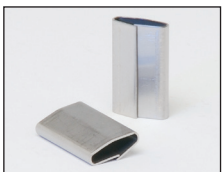
Wing Seals

Grade 304 Stainless Steel Wing Seals can be used with Strapbinder economy stainless steel strapping (pg 6) and Steelbinder Strapping™ (pg 10).

Item No.	Material	Width		Qty/Box	Weight	
		inch	mm		lbs	kg
ST154	Stainless Steel	1/2	12.7	100	1.1	0.5
ST156	Stainless Steel	3/4	19.0	100	2.1	0.9
ST202SS	Stainless Steel	1/2	12.7	1,000	10	5.0
ST203SS	Stainless Steel	5/8	15.8	1,000	18	5.0
ST204SSHD	Stainless Steel	3/4	19.0	1,000	21	9.5
202AL	Aluminum	1/2	12.7	1,000	3.0	1.3

Aluminum Banding (for use with Aluminum Wing Seals)

Item No.	Width		Thickness		Weight		Qty/Coil	
	inch	mm	inch	mm	lbs	kg	ft	M
SC305AL	1/2	12.7	.020	.51	2.4	1.1	200	61



Specialty Seals

Grade 304 Crimp style stainless steel pusher seals. Use with single notch sealers. Ideal for outdoor industrial applications.

Item No.	Width		Qty/Box	Weight	
	inch	mm		lbs	kg
ST1532SS	1/2	12.7	1,000	12.0	5.5
ST1534SS	3/4	19.0	1,000	15.0	6.8



Screwbinder™ Buckles

Screwbinder stainless buckles are used in applications when a temporary clamp is desired or space limitations do not allow for tool roll-over. A set screw locks the band after tensioning.

Item No.	Width		Qty/Box	Weight	
	inch	mm		lbs	kg
ST724	1/2	12.7	25	.5	0.2
ST726	3/4	19.0	25	.9	0.4



Part #800500
Battery Powered J-Series Clamping Tool

Battery powered clamping tool for stainless and galvanized 5/8" and 3/4" J-Series clamps. Tensions, locks and cuts the strap. Unlimited take up, no refeeding. 125 clamps per charge. Battery & charger included.



SEE OUR VIDEO AT
STRAPBINDER.COM



Part #800505
Battery Powered J-Series Bench Mounted System

Battery powered clamping tool for J-Series clamps. Dual use versatility. Portable for field repairs but also bench mountable for in-house production assemblies. Bench mount fixture, foot pedal, battery & charger included.



Part #800800
Battery Powered Center Punch Tensioning Tool

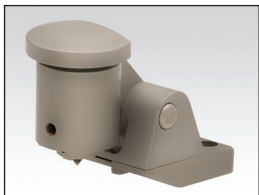
Battery powered center punch tensioning tool for 5/8 stainless steel and galvanized clamps. Single button activation. Preset tension settings yield constant tension on each clamp applied. Battery & charger included.



Part #800805
Battery Powered Band and Buckle Tensioning Tool

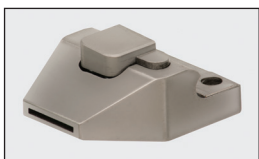
Consistent tensioning of 1/2" - 5/8" and 3/4" stainless strapping. Excellent option for large diameter hose, sign securement and bundling applications. Use with ear style buckles or wing seals. Battery and charger included.

GRIP CLAMP ACCESSORIES



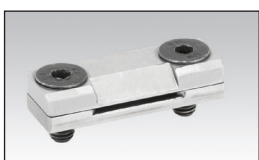
Part #800638
Center Punch Attachment

Center Punch attachment easily attaches to the GripClamp tool for the application of center punch clamps. Will accept most brands of 5/8" stainless and galvanized clamps.



Part #800637
Band and Buckle Attachment

Band and buckle attachment easily attaches to the GripClamp tool for use with band and buckle.



Part #800802
J Series Attachment

J Series attachment easily attaches to the GripClamp tool for the application of stainless and galvanized 5/8" and 3/4" J Series clamps.

For hose and sign securement applications, Strapbinder offers center punch tools for use with center punch clamps and spin tight tools to tension bands and buckles. All of our tools are lightweight and easy to use.



Center Punch Tools

HBC-300

The HBC-300 is a rugged, ratchet action tool designed for fast, efficient application of center punch clamps.

HBC-032

This adaptor is easily inserted into the HBC-300 center punch tool. For use with 3/8" (9.4 mm) band width clamps.



F38

The light duty F38 is a ratchet style center punch clamp application tool. Its portable design makes it ideal for field repairs.

Item No.	Description	Weight	
		lbs	kg
HBC-300	Center punch for 5/8" (15.7 mm) clamps	3.0	1.4
HBC-032	3/8" (9.4 mm) adaptor insert for HBC-300 tool	0.5	0.2
F38*	Light duty punch for 3/8" and 5/8" (9.4—15.7 mm) clamps	1.0	0.2

* ⚠ Warning: this product can expose you to chemicals including DINP, Di-isononyl Phthalate, which is known to the State of California to cause cancer and/or birth defects or other reproductive harm. For more information, visit www.P65warnings.ca.gov



Spin Tight Tools

The spin tight tensioner features a spring-loaded gripper for more efficient band handling. A black chromium finish provides corrosion resistance. The ST001 and the ST402B are used for tensioning stainless steel bands and buckles. Affix the HBJ-001 Adapter to this tool for J-Series clamp attachment.

ST-001

The ST-001 features a spring loaded gripper lever for more efficient strap handling. The cut-off handle is vinyl clad for easier operation. For use up to 3/4" x .030 band width.



ST402B

For heavy duty applications, the ST402B Bigbinder Spin Tight Tool, can pull up to 6,000 lbs. (2668 N) of tension. The built-in cutter cuts off band prior to buckle closing.

Item No.	Description	Weight	
		lbs	kg
ST-001	For stainless steel bands up to 3/4" x .030 (19 x .76 mm) Tensions up to 2400 lbs. (1068 N)	4.5	2.0
ST402B	For stainless steel bands from 3/4" x .044 to 1-1/4" x .048 (19 x 1.12 mm to 31.8 x 1.22 mm) Tensions up to 6,000 lbs. (2668N)	11.0	5.0



J-Series Adaptor

HBJ-001

The HBJ-001 adaptor allows J-Series preformed clamps to be applied in conjunction with the ST-001 Spin Tight Tool. High tension capability with simple "lift and lock" securement. For use with 3/8", 1/2", 5/8", and 3/4" band widths.



Item No.	Description	Weight	
		lbs	kg
HBJ-001	For use with J-series preformed clamps and ST-001 spin tight tool	1.5	0.7



Steelbinder™ Tensioner

ST101

This heavy duty windless tensioner is used with stainless steel strapping. It features a cutter and hammer knob for wing seal closing. For use with 3/8" x 3/4" x .030 (9.3-19.0 x 0.76 mm) maximum strapping. Highly portable, fast, reliable ratchet type tool. For sign hanging, insulation work and general application.



Pistol Grip Tensioner

ST1902D

Fast, reliable, easy to use for light duty application with 3/8" x 3/4" x .023 (9.3-19.0 x 0.58 mm) maximum strapping. Re-settable rack for additional take-up. One hand pistol grip operation is ideal for insulation and other light duty applications.

Item No.	Description	Weight	
		lbs	kg
ST101	3/8"-3/4" x .030 (9.3-19.0 x 0.76 mm)	3.0	1.4
ST1902D	3/8" x 3/4" x .023 (9.3-19.0 x 0.58 mm) pistol grip	2.5	1.1

STEELBINDER™ "JOB SITE" STRAPPING



Ribbon Wound Coils

For general packaging, bundling and palletizing. Painted black carbon steel Strapbinder Strapping is made from tempered, shock resistant steel for a wide range of packaging applications ranging from general palletizing to unitizing small irregular shapes.

Item No.	Width		Thickness		Break Strength	Weight		Qty/Coil	
	inch	mm	inch	mm		lbs	kg	ft	M
ST305X	1/2	12.7	.020	.51	800	29.0	13.2	865	264
ST306X	1/2	12.7	.025	.63	1,000	29.0	13.2	690	210
ST308	5/8	15.8	.020	.51	1,000	37.0	16.8	865	264
ST309	5/8	15.8	.025	.63	1,250	37.0	16.8	690	210
ST311	3/4	19.0	.020	.51	1,200	44.0	20.0	865	264
ST312	3/4	19.0	.025	.63	1,500	44.0	20.0	690	210

* Use stainless steel wing seals with Steelbinder Strapping.

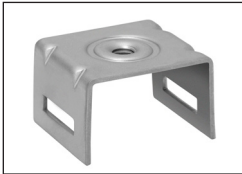
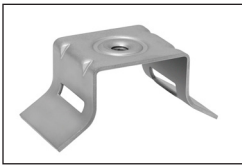


Portable Strap Dispenser For Steelbinder™ Strapping

ST400

Heavy duty, lightweight steel strap dispenser features brackets to hold tensioning and cutting tools along with a covered tray to carry seals. Handle is provided for maximum portability.

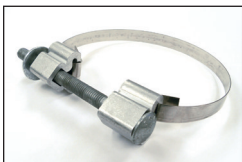
Item No.	Description	Coil Type	Strap size		Weight	
			inches	mm	lbs	kg
ST400	Vertical dispenser	Ribbon	3/8-3/4	9.5-19.0	15	6.8



Sign Brackets

201 stainless steel sign brackets are available for sign mounting, using Strapbinder stainless steel coils and banding up to 3/4" wide. The brackets are threaded and available with or without bolts and washers.

Item No.	Type	Description	Qty/Box	Weight	
				lbs	kg
AACS216455	Bolt	Stainless Steel 5/16" - 18 x 3/4"	50	1.5	.7
AAWL213455	Washer	Plastic 7/8" OD x 3/8" ID	50	.5	.2
ST000	Straight Leg Bracket Pack	Stainless Steel Bracket with SS Bolts and Plastic Washer	50	7.6	3.4
ST004	Straight Leg Bracket	Stainless Steel Bracket only	50	6.0	2.7
ST021	Flared Leg Bracket Pack	Stainless Steel Bracket with SS Bolt and Plastic Washer	50	7.6	3.4
ST022	Flared Leg Bracket	Stainless Steel Bracket only	50	6.0	2.7



Polebinder Bolt Clamp

Extruded aluminum fittings with zinc plated bolt, nut and washer. To be used with Strapbinder Band for mounting pole hardware.

Item No.	Description	Qty/Box	Weight	
			lbs	kg
ST500	Polebinder/bolt clamp for use with 3/4" strapbinder band. Includes plated nut, bolt 3/8-16 x 6" and washer	50	25	11.3
ST504	Polebinder bolt/clamp for use with 1-1/4" (31.7 mm) Bigbinder band. Includes plated nut, bolt 5/8-11 x 8" & washer	25	31.5	14.3

Special order only. Non-cancellable, non-returnable.



Mounting Plate

Strapping holds this extruded aluminum mounting plates to utility poles. Includes 5/8-11 x 2" bolt and nut.

Item No.	Description	Qty/Box	Weight	
			lbs	kg
ST510	Mounting Plate 1-1/2" x 4-3/4" with 2" Plated Bolt	25	15	6.8
ST512	Heavy Duty Mounting Plate 1-1/2" x 5-1/4" with 2" Plated Bolt	25	21.3	9.7



Ideal Tridon 56-0 Snaplock® Quick Release

Snaplock worm drive clamps are designed with a swivel-action that locks the screw to the band, making installation and removal much faster. The 56-0 clamp is constructed with 200 stainless steel 9/16" band and housing, a carbon steel bridge, and a 5/16" carbon steel screw. Snaplock is best suited for signs, seasonal banners, and general strapping and bundling.

Item No.	Size	Min (in)	Max (in)	Min (mm)	Max (mm)
56128	128	1-3/4	8-1/2	45	216
56188	188	2	12-1/4	51	311

For more sizes and information, go to page 22 in the Ideal Tridon catalog.



Identification Tags

The ID tags are .015" thick and can be fastened with Strapbinder **Pow'r-Wrap ties** (pg 5).

Item No.	Description	Material	Qty/Box	Weight	
				lbs	kg
ST750350	3/4" X 3-1/2"	T304	100	.6	.30
ST750200	3/4" X 2"	T316	100	.5	.20
ST150250	1-1/2" X 2-1/2"	T316	100	1.4	.67

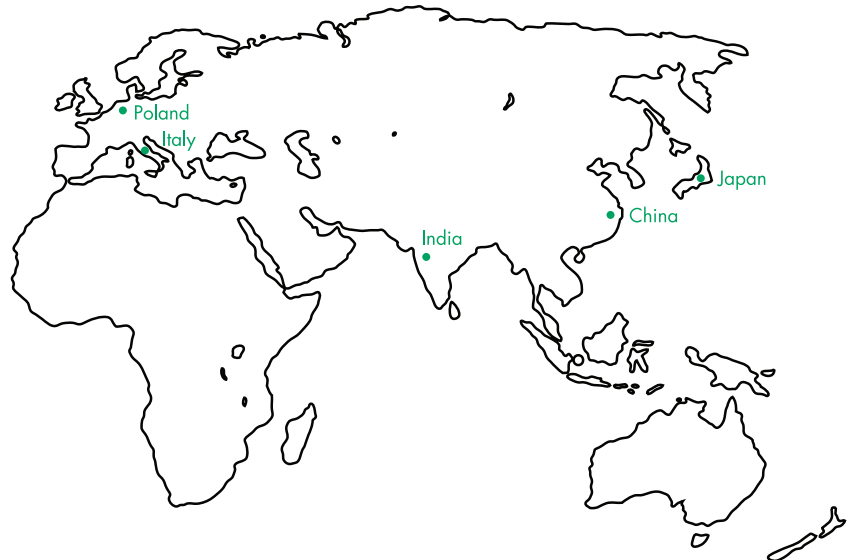
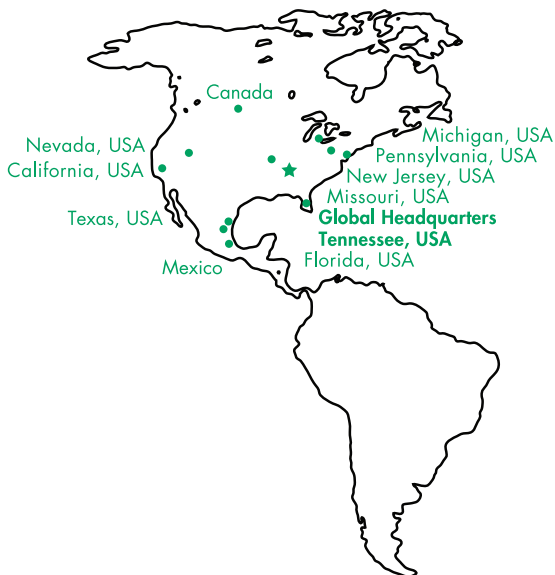




Innovation. Quality. Service. Connections are at the center of the Ideal Tridon Group.

We built a family of leading brands whose products connect and support pipe, tube, and hose that convey gases, liquids, and electricity. We are the global leader in worm gear, t-bolt, band, strut, specialty clamps, supports for hose, conduit, and fastening solutions, as well as fittings and couplings. Headquartered in Smyrna, Tennessee, the Ideal-Tridon Group has facilities throughout North America, Europe, and Asia.

For more information about Ideal-Tridon Group, visit www.idealtridongroup.com.





8100 TRIDON DRIVE SMYRNA, TN 37167

1-800-251-3220 • STRAPBINDER.COM